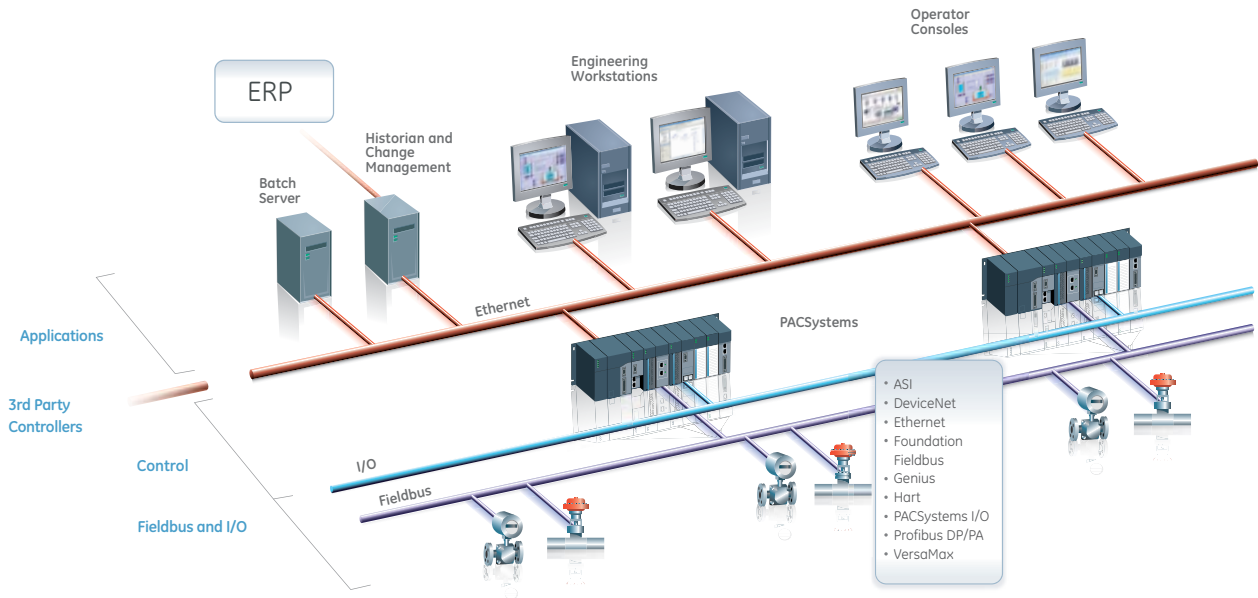


Proficy Process Systems Overview

Proficy Process Systems is a state-of-the-art, scalable, fully-integrated system for process automation and control. It provides the hardware and software needed for a complete process control system. Whether your business has continuous or batch oriented process control needs, Proficy Process Systems will deliver results. Based on contemporary, yet well proven technologies, Proficy Process Systems combines the power of traditional DCS systems with the flexibility, freedom and affordability of a PLC-based approach.



Architecture Overview

The Proficy Process Systems architecture is designed to provide a modular and expandable system to meet your most demanding process control needs. Proficy Process Systems can uniquely range from a small, one-machine architecture to a large, multi-machine architecture. This approach means you can start small and expand your system over time, at your pace. The system consists of several layers.

Proficy Process Systems

Applications Layer

The Applications Layer contains the software that powers the information capabilities of Proficy Process Systems, featuring:

Engineering Workstation

This is where you design, create, and maintain your system's configuration. With an advanced Logic Developer, you can create your control strategies in Function Blocks, Ladder Logic, or Structured Text for the PACSystems controllers.

Operator Console

This is where your operators monitor and control the process. Choose between our two industry leading HMI/SCADA visualization technologies for your system – CIMPLICITY® or iFIX®. The consoles communicate with the PACSystems controllers through our Global Namespace.

Historian

The Historian is designed specifically for handling process data. It provides high performance storage and retrieval with sub-second collection and millisecond time-stamping.

Change Management

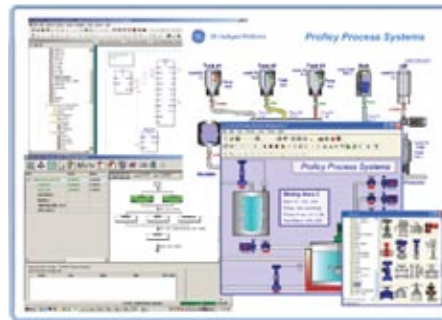
Change Management provides version control for your process control strategies, including audit trail capabilities.

Batch Execution

Batch Execution is the perfect option for batch-oriented processes. With advanced batch management, formulation management, batch direct, and tight linkage with our Batch Analysis option, you can optimize campaigns and batch runs.

ERP Connectivity

GE Intelligent Platforms have closed the gap between automation and information with our Proficy Production Management software products and ERP connector. Now you can link your control system to your business systems to truly drive operational excellence in your business.



Engineering Workstation



Operator Console

Proficy Process Systems

Controllers

The PACSystems RX7i and RX3i give Proficy Process Systems its flexibility, featuring a common engine which allows you to take programs that are created in one controller and easily move them to another.

Proficy Process Systems also features Control Memory Exchange, a breakthrough technology incorporated from GE's Embedded Systems Business. Through high-speed fiber optics, Control Memory Exchange allows data in one controller to be exchanged and shared with another controller at over a 2 giga baud rate. This allows you to synchronize controllers for distributed control, or reflect the memory state of one controller to another for redundant operations.



PACSystems RX7i



PACSystems RX3i

Fieldbus and I/O

GE has always taken an open approach with our products and technologies. We provide our customers with the best possible technology and give them the freedom to work with the devices and instruments of their choice.

Proficy Process Systems continues with that tradition. We understand that when it comes to process control, there are several choices for Fieldbuses. That's why we chose an Open Fieldbus approach to our system which supports the major Fieldbuses including:

- Foundation Fieldbus
- Profibus™
- Hart
- AS-I Interface
- Ethernet

We also provide you with a comprehensive portfolio of I/O, allowing you to choose the right strategy to meet your needs. Through OPC, native drivers, and by teaming with companies that specialize in Fieldbus and I/O connectivity, we can satisfy your connectivity needs – putting you in control of your Fieldbus strategy.

Product Selection Guide

Proficy Process Systems Products

Part Number	Includes				
	Engineering Workstation	Operator Console	Historian	Change Management	
Proficy Process Systems with iFIX and GlobalCare					
Proficy Process Systems - iFIX - 500 I/O	BC647PSF050	1	1	500 Tag	1
Proficy Process Systems - iFIX - 1000 I/O	BC647PSF100	1	1	1000 Tag	1
Proficy Process Systems - iFIX - 2000 I/O	BC647PSF200	1	1	2000 Tag	1
Proficy Process Systems - iFIX - 3000 I/O	BC647PSF300	1	1	3000 Tag	1
Proficy Process Systems - iFIX - 5000 I/O	BC647PSF500	1	1	5000 Tag	1
Proficy Process Systems - iFIX - 5000+ I/O	BC647PSF000	1	1	5000+ Tag	1
Proficy Process Systems with CIMPLICITY and Global Care					
Proficy Process Systems - CIMPLICITY - 500 I/O	BC647PSC050	1	1	500 Tag	1
Proficy Process Systems - CIMPLICITY - 1000 I/O	BC647PSC100	1	1	1000 Tag	1
Proficy Process Systems - CIMPLICITY - 2000 I/O	BC647PSC200	1	1	2000 Tag	1
Proficy Process Systems - CIMPLICITY - 3000 I/O	BC647PSC300	1	1	3000 Tag	1
Proficy Process Systems - CIMPLICITY - 5000 I/O	BC647PSC500	1	1	5000 Tag	1
Proficy Process Systems - CIMPLICITY - 5000+ I/O	BC647PSC000	1	1	5000+ Tag	1

Product Options

Used to add additional users to your system beyond those included with the base packages above

	Part Number
Additional Engineering Workstation - iFIX	BC647PPSEWF
Additional Engineering Workstation - CIMPLICITY	BC647PPSEWC
Additional Operator Console - iFIX	BC647PPSOFC
Additional Operator Console - CIMPLICITY	BC647PPSOCC
Proficy Process Systems EGD OPC Server	BC647PPSOPC

Complementary Products

These products can be used to expand the capabilities of your Process Systems

Change Management

	Part Number
Change Management 1 user	IC646PCM001
Change Management 5 users	IC646PCM005
Change Management 10 users	IC646PCM010
Change Management 25 users	IC646PCM025
Change Management Scheduler	IC646PCMSCH

Batch

	Part Number
Batch Server Small	IC647BSS000
Batch Server Medium	IC647BSM000
Batch Server Large	IC647BSL000
Batch Developer	IC647BSD000
Batch Client	IC647BSC999

Notes on Part Numbers and GlobalCare

- Support must be quoted on all new Proficy Process Systems
- Change IC prefix to GC for 15 months of GlobalCare Support

Notes on Licensing

- All Process Systems Licenses are based on Hardware Keys
- System architecture (number of nodes and types) is required at time of order to ensure correct license key manufacture